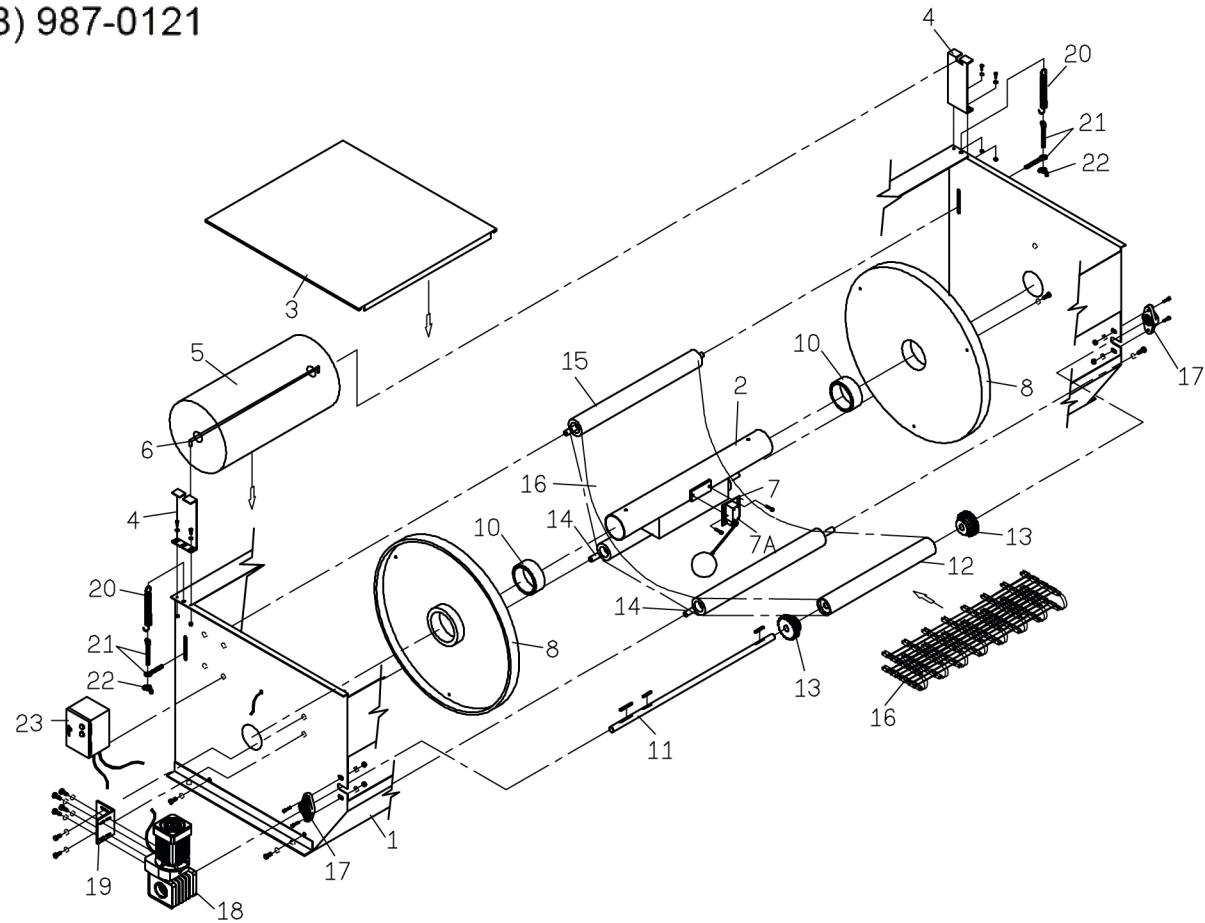
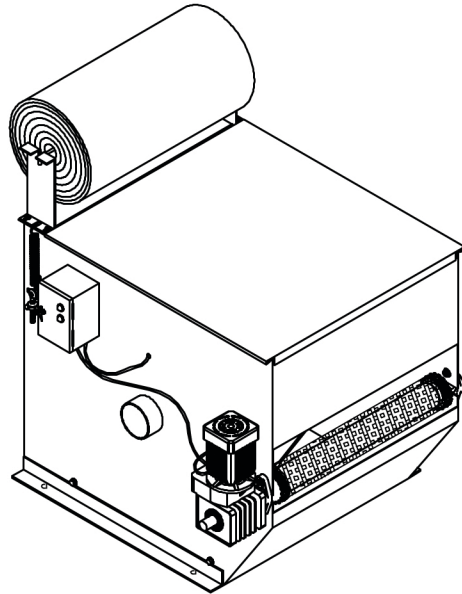


## Bergman Industrial Filters Cutting & Grinding Fluid Filtration Systems

### PAPER FILTER (DF140~2000)



No.	Name	Q	Material	No.	Name	Q	Material
1	Frame	1		12	Driving Shaft Pipe	1	
2	Inlet	1	P.S1	13	Driving Sprocket	2	#50X19T
3	Coping	1		14	Idler	2	
4	Paper Shelf	2		15	Tensible Wheel	1	
5	Filter Paper	1	P.S1	16	Conveyor	1	
6	Shaft	1		17	Driving Shaft Bearing	2	UCFL205
7	Float Switch	1		18	Reducing Motor	1	250W, 1/300
7A	Limit Switch	1	TZ-6106	19	Motor Stand	1	
8	Side Cover	2		20	Spring	2	
				21	Tensible Wheel Tuneup Bolt	4	M12
10	Self-Lubricating Bearing	2		22	Tensible Wheel Tuneup Nut	2	M12
11	Driving Shaft	1		23	Electric Box	1	

#### P.S1

Type	Peper Width	Inlet Size
DF140	500mm	PT3"
DF200	700mm	PT3"
DF360	700mm	PT4"
DF500	1000mm	PT4"
DF1000	1000mm	8"Flange, 5K
DF1500	1500mm	8"Flange, 5K
DF2000	2000mm	8"Flange, 5K

#### Remark in Usage:

- 1: Before power on, you must inspect if the voltage and the phase as correct as indicative instruction. If they mismatch, it will make damages.
- 2: If motor direction (Arrow direction) is incorrect, please exchange two power cords arbitrarily.
- 3: When you install the filter paper please make sure thriugh the side cover and the middre of conveyor.
- 4: Paper length must exceed filter frame's one; it is better to pull into the chip collector.
- 5: Keep an eye on if it is too much sludge in chip collector in order to avoid paper winding into conveyor.