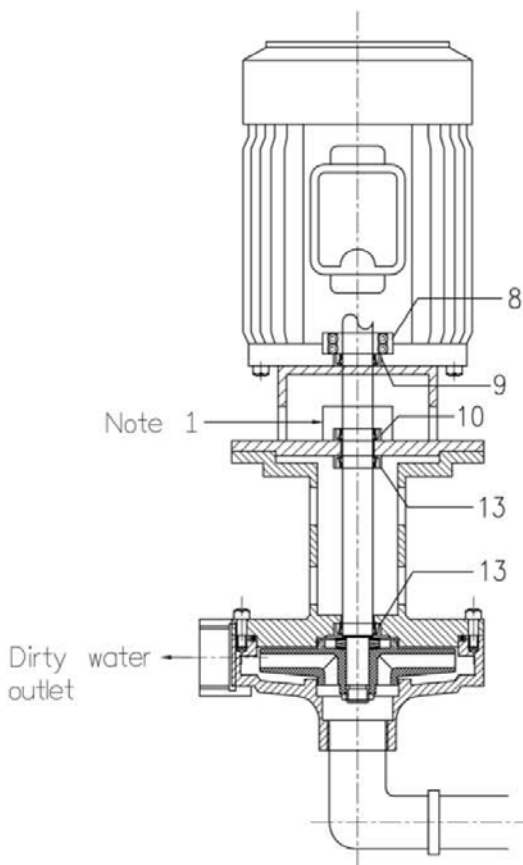
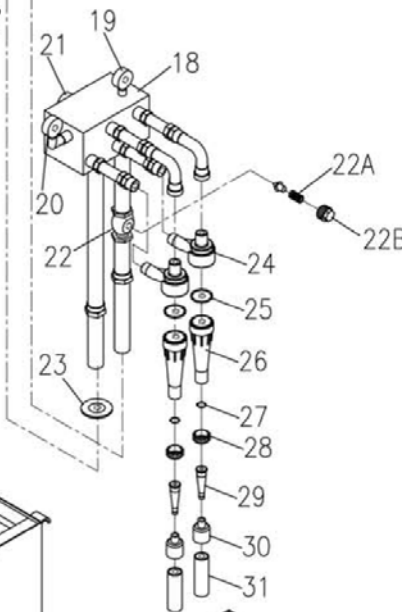
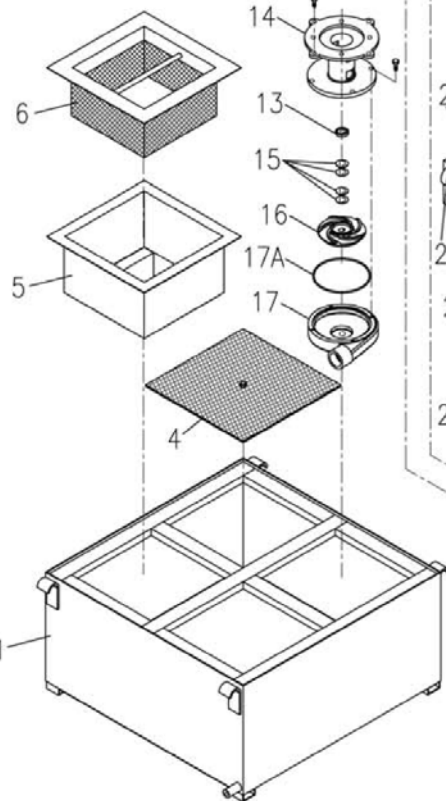
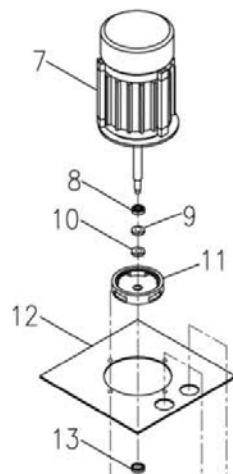
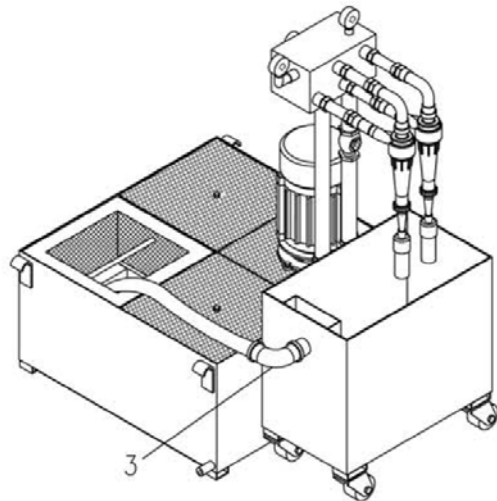


# HYDROCYCLONE (HC-B2)



No	Parts Name	Q	Material	No	Parts Name	Q	Material
1	Tank	1		18	Manifold pipe	1	
2	Chip collector	1		19	Low pressure gauge	1	3 kg/cm <sup>2</sup>
3	Dirty water drip line	2"		20	High pressure gauge	1	7 kg/cm <sup>2</sup>
4	Tank cover plate			21	Clean water outlet	1	
5	Inlet trough	1		22	Relief valve	1	
6	Dirty water inlet net	1	Weave net(5 p/in)	22A	Relief valve spring	1	Apply to Motor Hz
7	Motor	1	2HP/4P	22B	Spring holding stud	1	
8	Motor bearing	1	6205	23	Dust-proof gasket	1	
9	Motor shaft seal	1	TC 25-52-8	24	Upper nozzle		
10	Motor stand seal	1	TC 25-42-8	25	Upper nozzle O ring		P58
11	Motor stand	1		26	Taper pipe		
12	Pump anchor plate	1		27	Gasket		
13	Seal in pump leg	2	TC 25-42-8	28	Nut		
14	Pump leg	1		29	Lower nozzle		
15	Coning spring washer	4	∅(34-19)*2	30	Mantle		
16	Pump impeler	1	Apply to Motor Hz	31	Plastic pipe		
17	Pump	1					
17A	Pump O ring	1	G160				

**Usage remarks:**

- 1:Check voltage and phase whether or correct before power on.
- 2:Motor direction (Toward sludge direction) is incorrect, and then exchange two power cords arbitrarily.
- 3:Be aware of the dirty water drip line(3) if there is clogged, in order to avoid overflow from chip collector.
- 4:High,Low pressure gauge remain close all the time; open it when inspecting. On status of often open will reduce the lifespan of the pressure gauge.
- 5:High pressure gauge (20) of which pressure cannot lower than 2kg/cm<sup>2</sup> (green mark).
- 6:Low pressure gauge (19) of which pressure can not higher than 1kg/cm<sup>2</sup> (green mark).

**Frequently asked damage and removal:**

- Q 1:**The flow runs short in clean water outlet (21):  
 Removal: 1.Check against pressure gauge if been regular, or please call for UNI to maintain when gauge is lower than 2kg/cm<sup>2</sup>.  
 2:What if gauge's pressure is regular please discharge water out piping and check against clean water outlet (21) in case there is anything clogged.
- Q 2:**Not drain residue off in dirty water outlet (31):  
 Removal: 1:Take off plastic pipe (31) and mantle (30).  
 2:After taking off plastic screw by clockwise, take down lower nozzle and clear pipe sludge inside.  
 3:Clean up already, fit it back by counterclockwise.

**Note 1:**If there is liquid in opening, it represents worn in shaft seal of pump leg. You can use still safely because shaft has four stages of sed's protection to avoid motor breakdown; namely liquid goes inside motor when shaft runs.

**Note 2:**If there is too much liquid in opening, please contact UNI in maintenance to get rid of failure seal bringing about motor breakdown.

**Note 3:**Lower nozzle is made of ceramic, so please don't knock when clearing.

**Note 4:**Please check low pressure gauge (19), make sure the pressure is not over 1kg/cm<sup>2</sup>. When the pressure is higher, it represents dirty water outlet is clogged; therefore, proceed with the steps of damage removal otherwise it will abrade Taper pipe (26) when residue accumulate too much.

