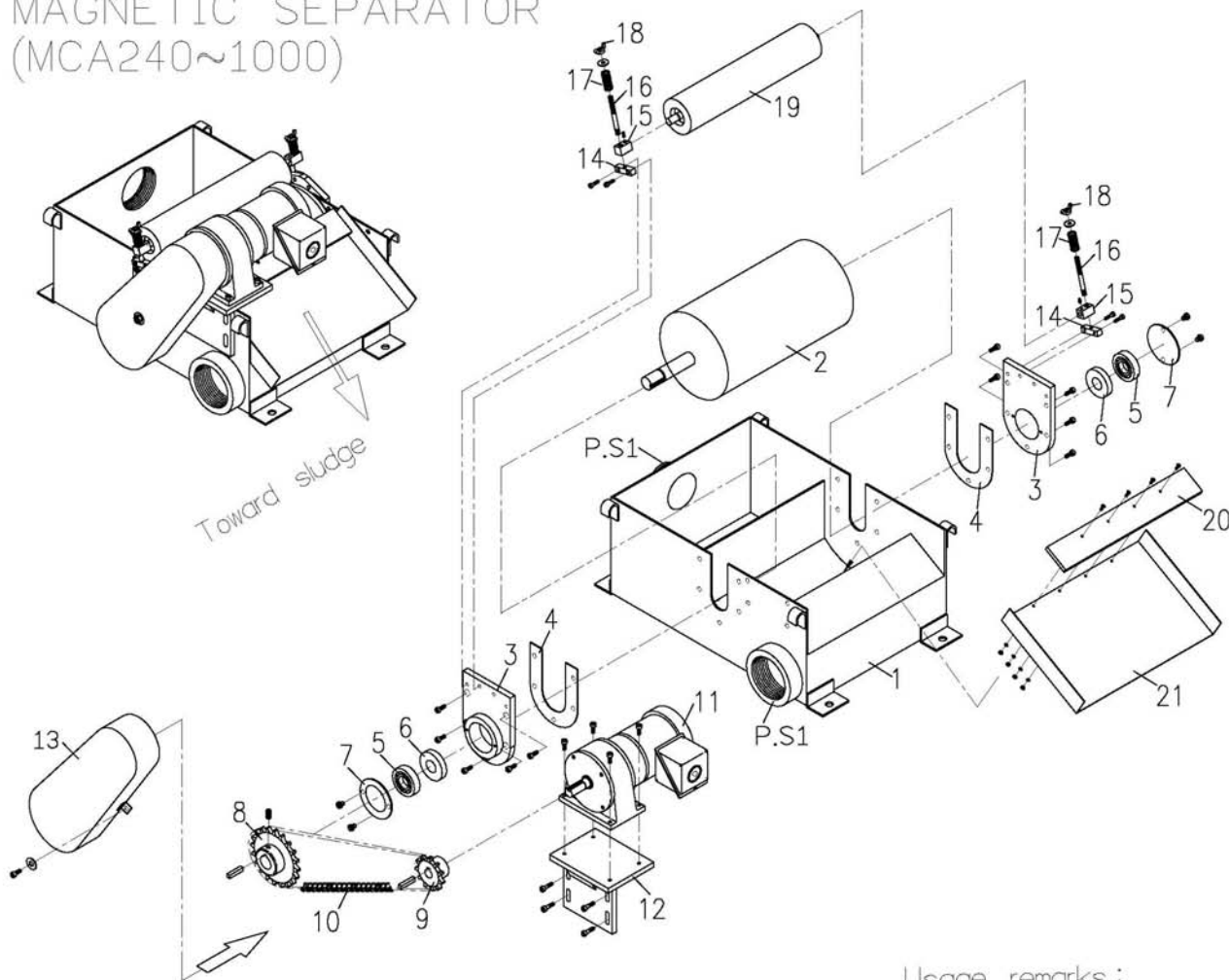


# MAGNETIC SEPARATOR (MCA240~1000)



P.S1: Inlet, Outlet Size

TYPE	Inlet Size	Outlet Size
MCA-240	PF 3"	PF 3"
MCA-360	PF 4"	PF 4"
MCA-500	PF 5"	PF 5"
MCA-800	PF 5"	PF 5"
MCA-1000	PF 6"	PF 6"

NO.	ITEM	PCS	TYPE
1.	Frame	1	
2.	Magnetic Drum	1	
3.	Drum Bearing Case	2	
4.	Packing	2	
5.	Bearing	2	1306
6.	Oil Seal	2	30*72*10
7.	Bearing Cover	2	
8.	Sprocket	1	#40,N=27
9.	Sprocket	1	#40,N=18
10.	Chain	1	#425
11.	Motor	1	
12.	Motor Stand	1	
13.	Sprocket Cover	1	
14.	Bolts Seat	2	
15.	Roller Seat	2	
16.	Bolts	2	M12
17.	Spring	2	
18.	Butterfly Bolts	2	M12
19.	Gum Roller	1	
20.	Upper Scraper	1	SUS301
21.	Lower Scraper	1	SUS304

### Usage remarks :

1. Check voltage and phase whether or correct before power on.
2. Motor direction (Arrow direction) is incorrect, and then exchange two power cords arbitrarily.
3. No use, please do not press on the Gum Roller in order to avoid deforming.
4. When Separator is operating, turn the Butterfly Bolts 18 on and continue to up pressure Gum Roller with 4~5 loops of turnings.
5. Attend the Sludge Collector a rule during operating will prevent from overflow in case accumulation is too much.