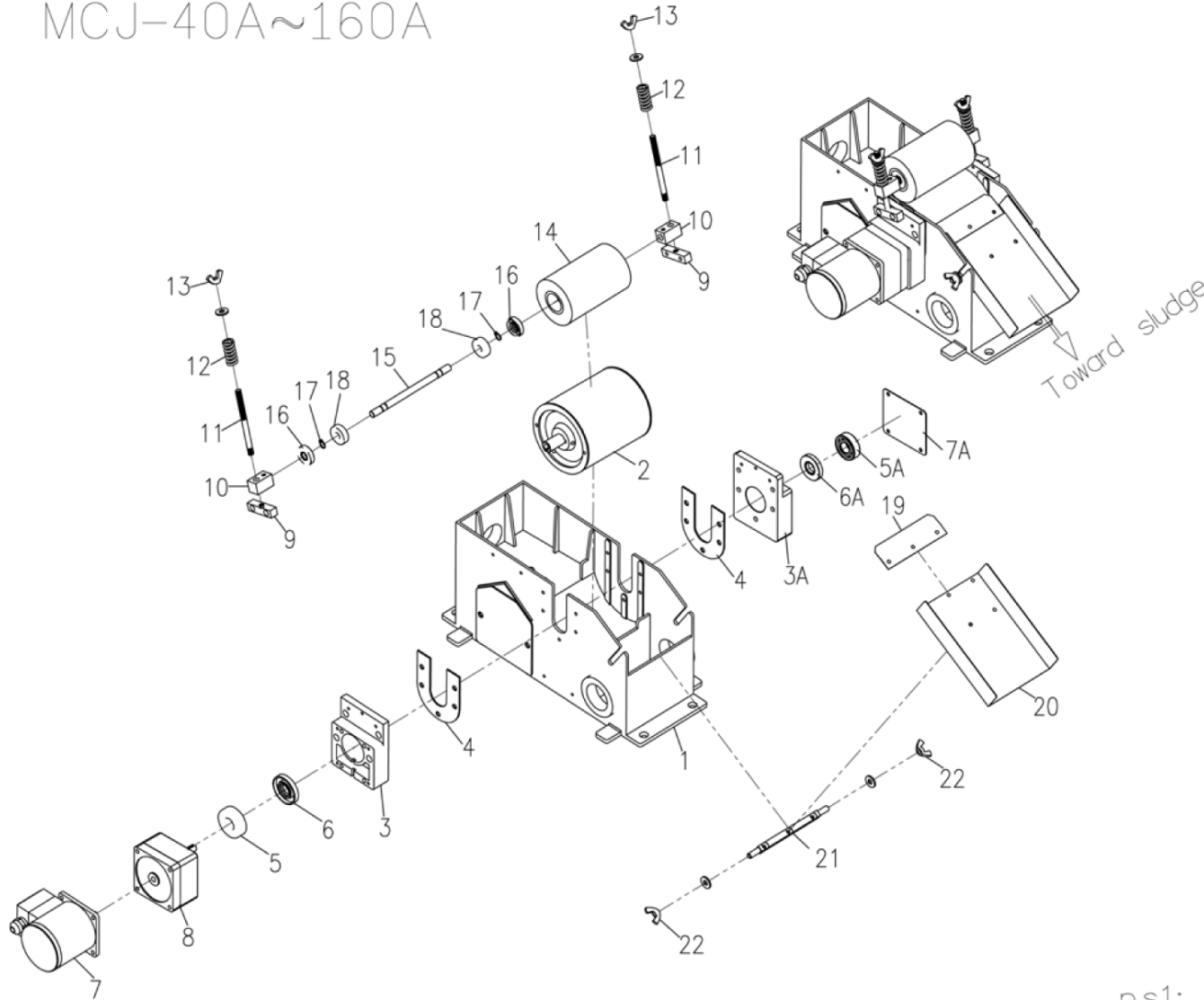


MCJ-40A~160A



NO.	ITEM	PCS	TYPE
1	Frame	1	
2	Magnetic Drum	1	
3	Drum Bearing Case(drive side)	1	
3A	Drum Bearing Case(fallow side)	1	
4	Packing	2	
5	Bearing(drive side)	1	1204
5A	Bearing(fallow side)	1	1203
6	Oil Seal(drive side)	1	20*47*7
6A	Oil Seal(fallow side)	1	17*40*7
7	Motor	1	
7A	Bearing Case Cover	1	
8	Speed reducer	1	
9	Bolts Seat	2	
10	Roler Seat	2	
11	Bolt	2	M8
12	Spring	2	
13	Butterfly Bolts	2	M8
14	Gum Roler	1	
15	Axial	1	
16	Oil Seal	2	TC-10-30-7
17	Ring	2	
18	Bearing	2	6200
19	Upper Scraper	1	SUS301
20	Lower Scraper	1	SUS304
21	Scraper Fasten Bar	1	
22	Scraper Butterfly Bolts	2	M8

Usage remarks:

1. TO Check Voltage and Phase are correct before power on.
2. IF motor direction (Toward sludge direction) is incorrect, and then exchange two power cords arbitrarily.
3. No use, please do not press on Gum Roler in order to avoid morphing.
4. When Separator is operating, turn Butterfly bolts (13) on and continue to up pressure Gum Roler with 4~5 loops of turnings.
5. Make attend Sludge Collector a rule during operating in order to prevent from overflow if accumulation is too much.

p.s1:

Size	Type	MCJ-40A	MCJ-60A	MCJ-80A	MCJ-120A	MCJ-160A
Inlet		PF2"	PF2"	PF2"	PF3"	PF3"
Outlet		PF2"	PF2"	PF2-1/2"	PF3"	PF3"
Motor		25W	25W	25W	40W	40W
Reducer Gear		1:180	1:180	1:180	1:180	1:180