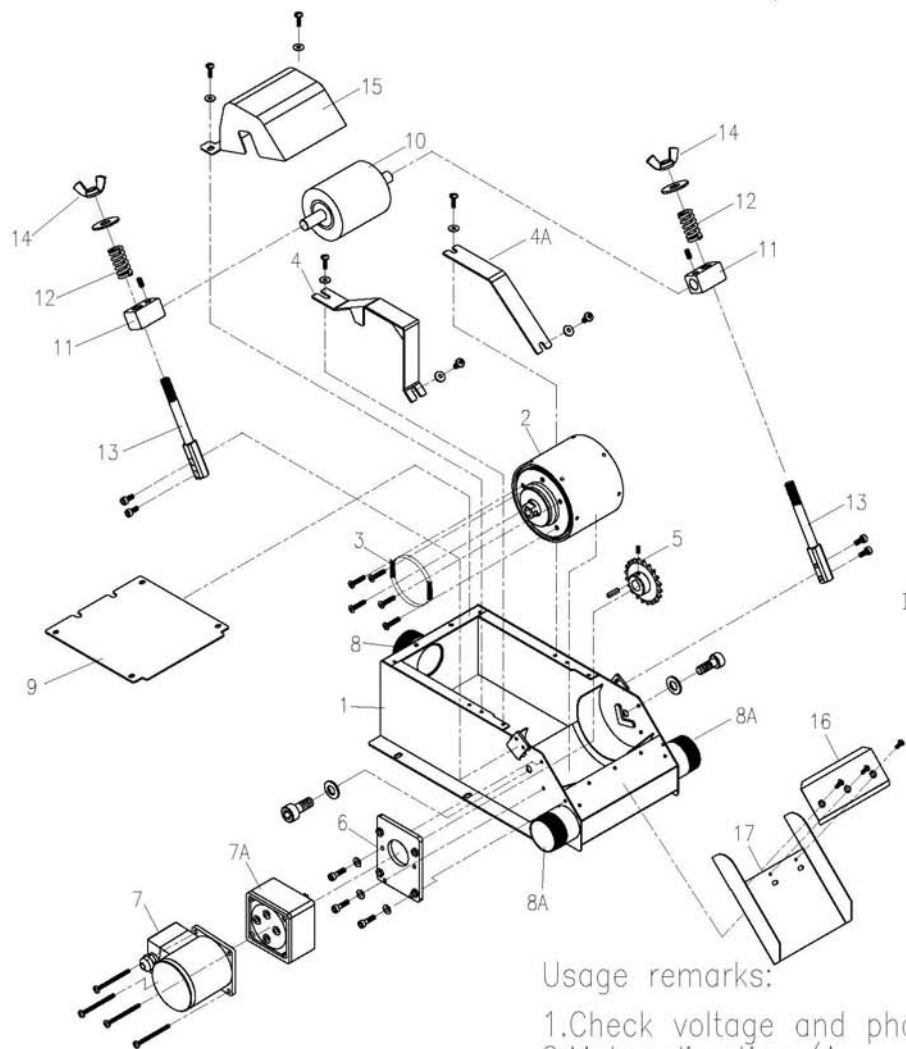


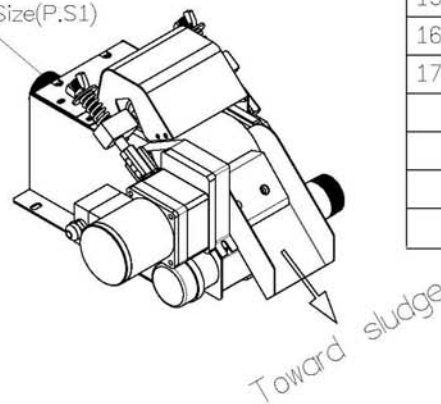
# SUPER MAGNETIC SEPARATOR (MSK20~MSK300)



P.S1: Inlet, Outlet Size

TYPE	Inlet Size	Outlet Size
MSK-20	PT1-1/2"	PT1-1/2"
MSK-30	PT1-1/2"	PT1-1/2"
MSK-40	PT1-1/2"	PT1-1/2"
MSK-60	PT2"	PT2"
MSK-80	PT2"	PT2"
MSK-100	PT2-1/2"	PT2-1/2"
MSK-150	PT3"	PT3"
MSK-180	PT3"	PT3"
MSK-240	PT3"	PT4"
MSK-300	PT4"	PT4"

Inlet Size(P.S1)



No	PARTS Name	Q	Material
1	Frame	1	
2	Magnetic Drum	1	
3	Drive Chain	1	#50
4	Sprocket Cover (Drive Side)	1	
4A	Sprocket Cover	1	
5	Sprocket	1	#50*12T
6	Motor Stand	1	
7	Motor	1	25W
7A	Gear Motor	1	1:180
8	Inlet	1	P.S1
8A	Outlet	2	P.S1
9	Inlet Cover	1	
10	Gum Roller	1	
11	Gum Roller Seat	2	
12	Gum Roller Spring	2	
13	Bolts	2	M12
14	Butterfly Bolts	2	M12
15	Gum Roller Cover	1	
16	Upper Scraper	1	SUS
17	Lower Scraper	1	SUS

Usage remarks:

1. Check voltage and phase whether or correct before power on.
2. Motor direction (Arrow direction) is incorrect, and then exchange two power cords arbitrarily.
3. No use, please do not press on the Gum Roller in order to avoid deforming.
4. When the Separator is operating, turn the Butterfly Bolts(14) on and continue to up pressure Gum Roller with 4~5 loops of turnings.
5. Attend the Sludge Collector a rule during operating will prevent from overflow in case accumulation is too much.