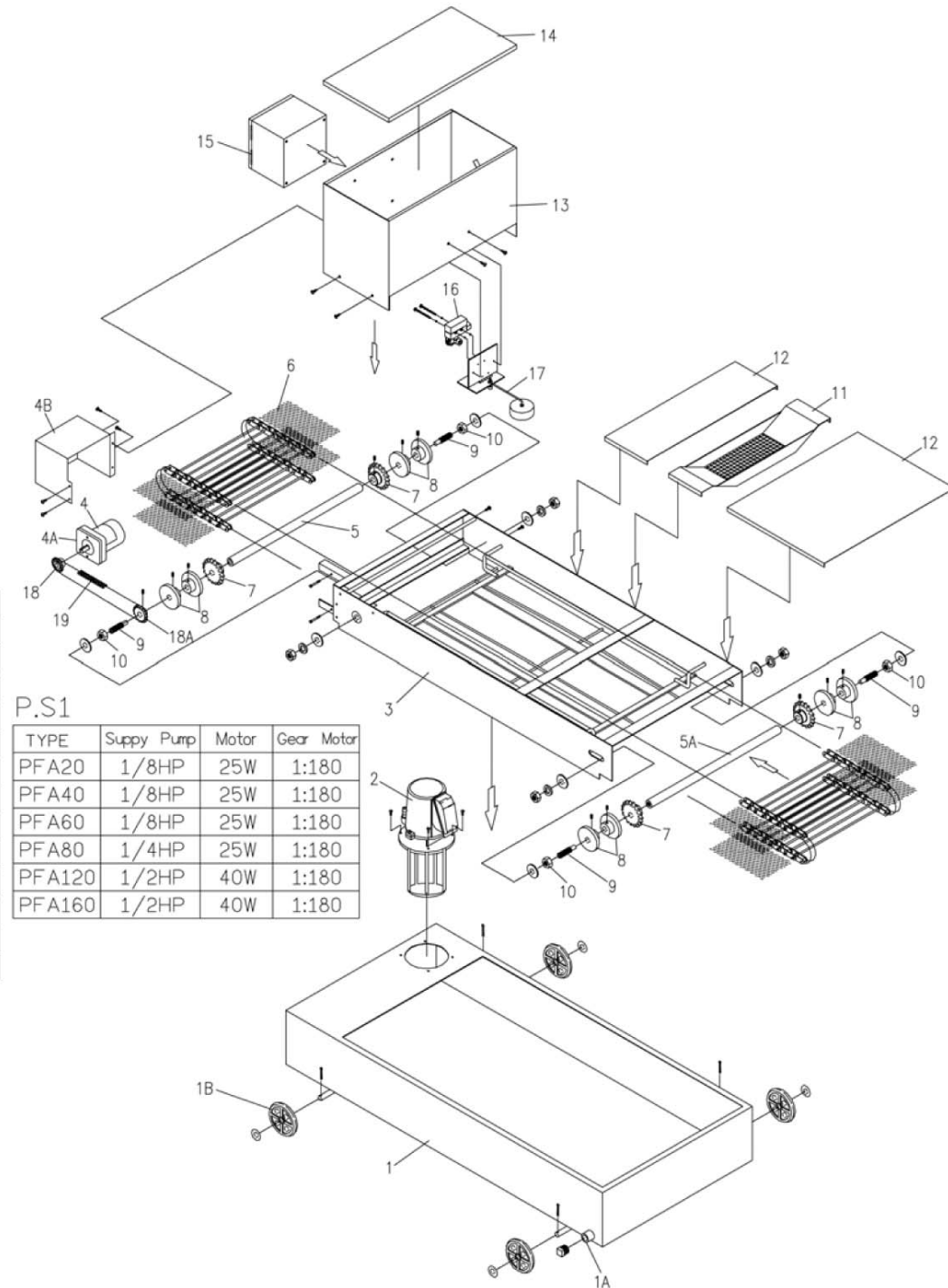
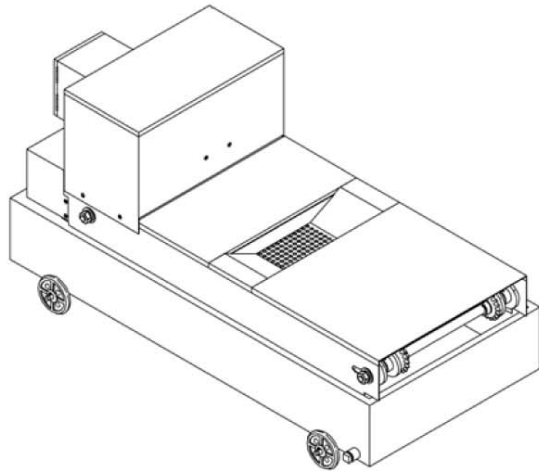


PAPER FILTER (PFA20~160)



No	Name	Q	Material	No	Name	Q	Material
1	Tank	1		9	Set Screw	3	M16
1A	Drain	1		10	Nut	6	M16
1B	Tank Caster	4		11	Inlet	1	
2	Supply Pump	1	P.S.1	12	Safe Cover		
3	Frame	1		13	Paper Box	1	
4	Motor	1	P.S.1	14	Paper Box Cover	1	
4A	Gear Motor	1	P.S.1	15	Electrical Box	1	
4B	Motor Cover	1		16	Limited Switch	1	TZ6104
5	Drive Shaft	1		17	Float Switch	1	
5A	Driven Shaft	1		18	Sprocket	1	#35*12T
6	Conveyor Chain Set	1		18A	Sprocket	1	#35*20T
7	Sprocket	4	#530*18T	19	Chain	1	#35
8	Support wheel	8					

P.S.1

TYPE	Supply Pump	Motor	Gear Motor
PFA20	1/8HP	25W	1:180
PFA40	1/8HP	25W	1:180
PFA60	1/8HP	25W	1:180
PFA80	1/4HP	25W	1:180
PFA120	1/2HP	40W	1:180
PFA160	1/2HP	40W	1:180

Remark in Usage:

- 1: Before power on, you must inspect if the voltage and the phase as correct as indicative instruction. If they mismatch, it will make damages.
- 2: If motor direction (Arrow direction) is incorrect, please exchange two power cards arbitrarily.
- 3: Pull up the float ball slightly before paper goes under the float ball.
- 4: Paper length must exceed filter frame's one; it is better to pull into the chip collector.
- 5: Keep an eye on if it is too much sludge in chip collector in order to avoid paper winding into frame.