



CFMp-Series Precision Candle Filters Portable

A portable solution that can be maneuvered between machines. Ideal with EDM or fine filtering application.

Filter Efficiency:

- 1 ~ 3 micron

For Oil Based Coolants



Grinding oil samples
Before and after



Each candle is comprised of thousands of compressed wafers that restrict particle from 1 ~ 3 micron

1. Coolant filtration system for EDM and oil grinding fluids
2. Each candle-like filter element is composed of thousands of compressed thin wafers. When dirty fluid passes through the compressed wafers, all particles over one micron are trapped on the outside edge of the filter element.
3. Filter efficiency reaches 1 ~ 3 micron.
4. Automatically cleaned by a rapid backwash cycle. Compressed air is used to blow out particles trapped on the filter elements and then deposit them into a sludge basket for recovery or disposable.
5. Life span of the filter elements last several years.

Recommended Oil (No water mixed, which will deteriorate oil quality and reduce flow rate.)

Grinding Oil

BRAND	VISCOSITY	FLASH POINT
CROWN CUT 850	43 SUS@ 100°F	266°F
Sintogrand TT	45 SUS@ 100°F	320°F
Castrol 488 CF	45 SUS@ 100°F	230°F
Castrol Honilo 980	43 SUS@ 100°F	250°F
OMNI-Grind V	37 SUS@ 100°F	239°F
Norpar 15	33 SUS@ 100°F	240°F
Emol-O-Grind 168/3	45 SUS@ 100°F	266°F

EDM Oil

BRAND	VISCOSITY	FLASH POINT
Castrol SE 180	37 SUS@ 100°F	212°F
US-1	36 SUS@ 70°F	240°F
US-2	32 SUS@ 77°F	165°F
US-3	34 SUS@ 77°F	210°F
Interlyte	37 SUS@ 72°F	220°F
Iono Plus	37 SUS@ 77°F	225°F
Commonwealth 259T	37 SUS@ 72°F	259°F
Commonwealth 244	37 SUS@ 72°F	244°F

CFMp-Series Precision Candle Filters Portable

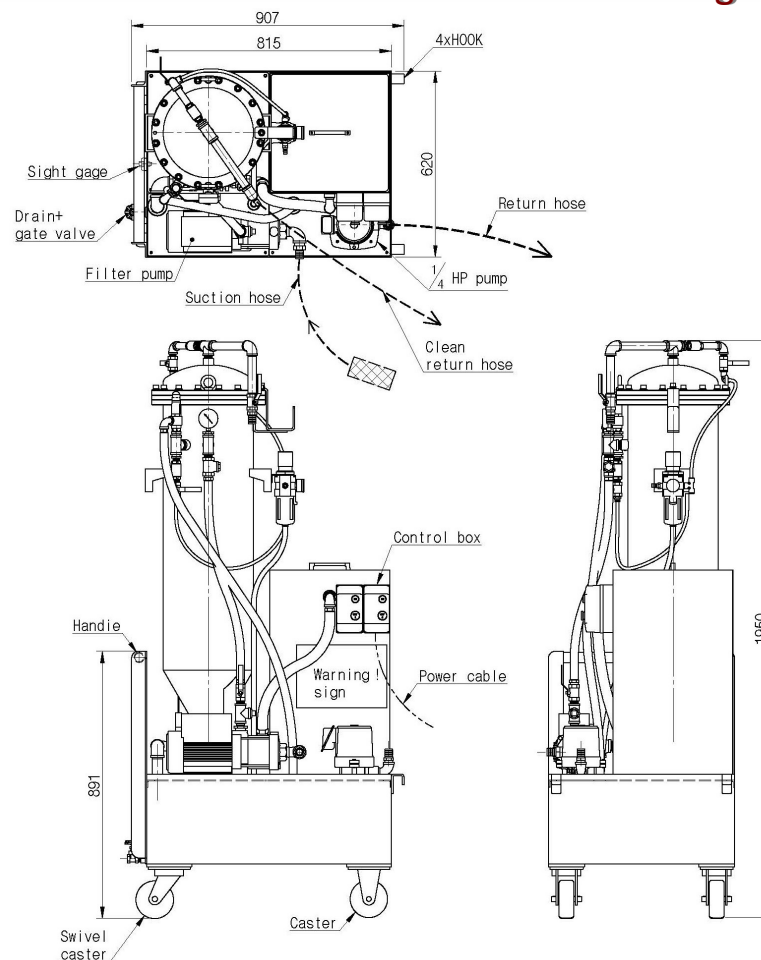
A portable solution that can be maneuvered between machines.
Ideal for EDM and small carbide tool grinders.

Application:

- Electric Discharge Machines
- Carbide Tool Grinders

Max Permissible Oil Viscosity:

- EDM under 37 sus (73°F, 22.8°C)
- Grinder under 45 sus (100°F, 37.8°C)



Model	Candle No.	Flow Rate lpm (gpm)	L	W	H	Supply Pump	Stock Number
CF2MP-9	9	13.5 (3.5)	907	620	1950	1/4-hp	755-013F0009
CF2MP-13	13	19.5 (5.2)	907	620	1950	1/4-hp	755-013F0013
CF3MP	19	28.5 (7.5)	907	620	1950	1/4-hp	755-013F0019
CF3.5MP	37	55.5 (14.7)	907	620	1950	1/4-hp	755-013F0037